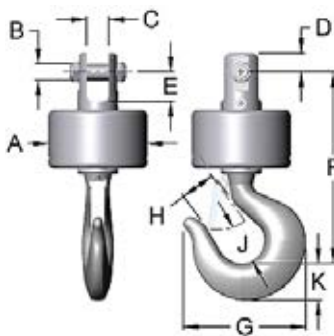


SWIVELS- g-LINK, OVERHAUL (ANGULAR CONTACT)



- Miller's **g-Link** overhaul swivels weigh 2 ½ to nearly four times as much standard swivels of the same type
- Adds overhaul weight without increasing overall length
- Ideal for small truck cranes and low head room applications where only minimal overhaul weight is required
- For 1.5 to 8.5 ton Working Loads
- Angular contact ball bearings for low torque swivel motion
- Machined from forged alloy steel bar
- Zinc plating inside and out for effective protection against corrosion.
- The g-Link is available with many of the other end fittings shown in this catalog. If you do not see your requirement in the following tables, please inquire.

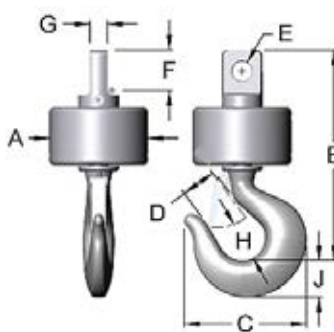
CLEVIS TO HOOK - TYPE 125



WLL* Tons	Model Number	Rope size	A	B	C	D	E	F	G	H	J	K	Weight Lbs.
1.5	B-125	3/8	4	0.5	0.5	.69	0.78	6.09	4.09	1.13	1.19	1.13	9
3	C-125	1/2	5	0.75	0.75	.94	1.19	8.38	4.94	1.34	1.38	1.48	17.94
5	D-125	5/8	7	0.88	1	1.13	1.56	12.63	6.5	1.69	1.75	1.81	43.81
8.5	EE-125	3/4	7	1.19	1.56	1.34	2.09	13.75	8.94	2.25	2.56	2.59	60

* Design factor 5:1 * Models 5 Ton and up include lubrication fitting.

EYE TO HOOK - TYPE 225



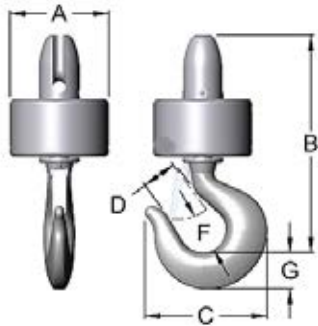
WLL* Tons	Model Number	Rope Size	A	B	C	D	E	F	G	H	J	Weight Lbs.
1.5	B-225	3/8	4	6.25	4.09	1.13	0.66	1.38	0.5	1.19	1.13	9
3	C-225	1/2	5	9.75	4.81	1.34	0.91	1.88	0.75	1.38	1.44	17.94
5	D-225	5/8	7	12.5	6.5	1.69	1.28	2.5	1	1.75	1.81	43.81
8.5	EE-225	3/4	7	13.5	8.69	2.25	1.41	3.13	1.25	2.56	2.59	60

* Design factor 5:1 * Models 5 Ton and up include lubrication fitting.



SWIVELS- g-LINK, OVERHAUL (ANGULAR CONTACT)

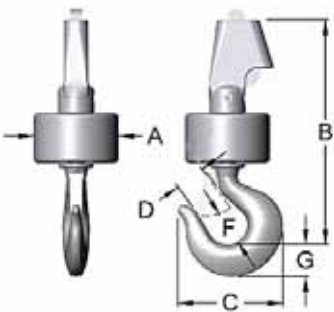
THIMBLE TO HOOK - TYPE 625



WLL* Tons	Model Number	Rope Size	A	B	C	D	F	G	Weight Lbs.
1.5	B-625	3/8	4	8.22	4.09	1.13	1.19	1.13	9.38
3	C-625	1/2	5	10.5	4.94	1.34	1.38	1.19	19.19
5	D-625	5/8	7	14.22	6.5	1.69	1.75	1.81	45.31
8.5	EE-625	3/4	7	15.5	8.69	2.25	2.19	2.59	56.25

* Design factor 5:1 * Models 5 Ton and up include lubrication fitting.

WEDGE TO HOOK - TYPE 725



WLL* Tons	Model Number	Rope Size	A	B	C	D	F	G	Weight Lbs.
3	C-725	1/2	5	12.69	4.94	1.34	1.13	1.19	20.38
5	D-725	1/2, 5/8	7	17.19	6.5	1.69	1.75	1.81	47.88
8.5	EE-725	1/2, 5/8, 3/4	7	18.5	8.69	2.25	2.56	2.59	65.25

* Design factor 5:1 * Models 5 Ton and up include lubrication fitting.



High Quality Lifting Products
since 1935

www.millerproducts.net
800.733.7071

Load Handling SOLUTIONS

Blocks • Swivels • Forged Hooks • Sheaves • Insulating Links



CELEBRATING OUR 80TH YEAR!

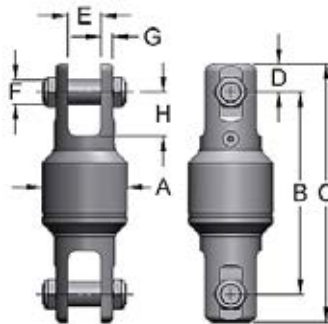
SWIVELS- HD-LINK, HEAVY DUTY (ANGULAR CONTACT)



- Heavy Duty (HD) barrel for maximized swivel life in rough conditions
- Thick-walled barrel protects bearings and seals from shock and dust
- Equipped with low torque angular contact ball bearings like Miller Y-Link
- Designed for high impact, abrasive environments as found in demolition, quarries, etc.
- Machined from solid forged alloy steel bar
- Zinc plating inside and out for effective protection against corrosion
- Grease fitting allows for easy, frequent lubrication
- For Working Loads from 5 to 35 tons and wire rope sizes 5/8" to 1 1/2"
- Higher capacities are available upon request

For demolition, the swivel selected should be one size larger than the normally recommended size, should be lubricated daily, and should be installed 4-6 feet above the breaking ball overhaul weight.

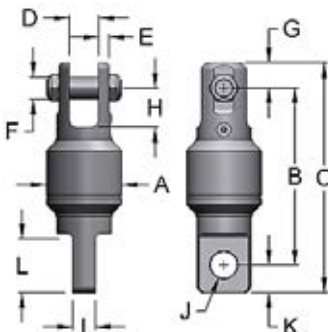
CLEVIS TO CLEVIS - TYPE 131



WLL* Tons	Model Number	Rope Size	A	B	C	D	E	F	G	H	Weight Lbs.
5		5/8	3.5	7.94	10.19	1.13	1	.88	0.56	1.56	12
5	D-131	5/8	3.5	7.94	10.19	1.13	1	.88	0.56	1.56	12
8.5	EE-131	3/4	4	9.63	12.31	1.34	1.56	1.19	0.56	2.09	19.75
15	GG-131	1	5	14	17.5	1.75	1.75	1.5	0.81	3.5	50
35	HH-131	1 1/2	6	15.94	20.69	2.38	2	2	1.13	3.69	99
45	I-131		7	20.06	26.06	3	2.5	2.25	1.25	4	160

* Design factors for WLL=35T and below are 5:1; and 45T are 4:1

CLEVIS TO EYE - TYPE 132

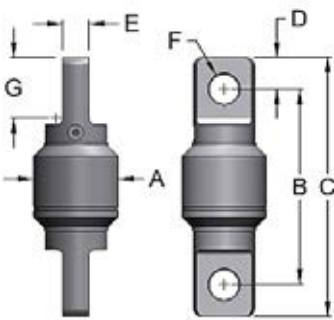


WLL* Tons	Model Number	Rope Size	A	B	C	D	E	F	G	H	I	J	K	L	Weight Lbs.
5	D-132	5/8	3.5	7.88	10.19	1	0.56	.88	1.13	1.56	1	1.28	1.19	2.5	11.38
8.5	EE-132	3/4	4	9.5	12.34	1.56	0.56	1.19	1.34	2.09	1.25	1.41	1.5	3.13	19.75
10	G-132	7/8	5	13.94	17.5	1.75	0.81	1.5	1.75	3.5	1.72	1.66	1.81	4.66	49
15	GG-132	1	5	13.63	17.5	1.75	0.81	1.5	1.75	3.5	2	2.03	2.13	4.91	50
35	HH-132	1 1/2	6	16.44	21.19	2	1.13	2	2.38	3.69	2.25	2.31	2.38	5.25	96
45	I-132		7	20.06	26.06	2.5	1.25	2.25	3	4	2.5	2.53	3	7	155

* Design factors for WLL=35T and below are 5:1; and 45T are 4:1

SWIVELS- HD-LINK, HEAVY DUTY (ANGULAR CONTACT)

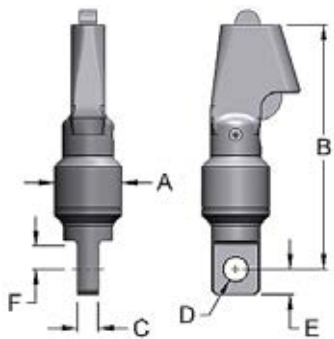
EYE TO EYE - TYPE 232



WLL* Tons	Model Number	Rope Size	A	B	C	D	E	F	G	Weight Lbs.
5	D-232	5/8	3.5	7.69	10.19	1.19	1	1.28	2.5	11
8.5	EE-232	3/4	4	9.31	12.34	1.5	1.25	1.41	3.13	19.25
10	G-232	7/8	5	13.88	17.5	1.81	1.72	1.66	4.66	47
15	GG-232	1	5	13.25	17.5	2.13	2	2.03	4.91	48
35	HH-232	1.5	6	16.5	21.19	2.38	2.25	2.31	5.25	93
45	I-232		7	20.06	26.06	3	2.5	2.53	7	150

* Design factors for WLL=35T and below are 5:1; and 45T are 4:1

WEDGE TO EYE - TYPE 732



WLL* Tons	Model Number	Rope Size	A	B	C	D	E	F	Weight Lbs.
5	D-732	1/2, 5/8	3.5	12.5	1	1.28	1.19	1.31	15
8.5	EE-732	1/2, 5/8, 3/4	4	14.25	1.25	1.41	1.5	1.63	25
10	G-732	3/4, 7/8, 1	5	19.69	1.72	1.66	1.81	2.84	55
15	GG-732	3/4, 7/8, 1	5	19.38	2	2.03	2.13	2.78	56
25	H-732	1 1/8, 1 1/4	6	25.44	2.25	2.31	2.38	2.88	119
35	HH-732	1 1/8, 1 1/4	6	25.44	2.25	2.31	2.38	2.88	119

* Design factors for WLL=35T and below are 5:1; and 45T are 4:1

MILLER

Load Handling SOLUTIONS

- ▶ Swivels
- ▶ Forged Hooks
- ▶ Blocks
- ▶ Sheaves

SCR Pull-In Swivel
375 metric tons working load

www.millerproducts.net